

LEON CUPRA

THE ORIGINAL



CREATE YOUR
OWN PATH

CUPRA

08

EXTERIOR DESIGN

20

INTERIOR DESIGN

14

COLOURS

26

TECHNOLOGY



MEET THE LEON CUPRA,
EPITOME OF PERFORMANCE
AND SOPHISTICATION.
EXPERIENCE ITS 300 HP ENGINE
THAT TESTS THE LIMITS. ITS
4DRIVE FOR BETTER TRACTION
AND CONTROL. ITS UNIQUE
COPPER DETAILS INSIDE AND
OUT. AND ITS SPACIOUSNESS
FOR THOSE WHO WANT MORE.

EXTERIOR
DESIGN





LEON CUPRA SPORTSTOURER.

Feel the performance with engines that range from 290HP and up to 300HP – without compromising on extra boot space. It's all you need to create the path ahead.



LEON CUPRA 5D.

Power and contemporary style come together in perfect harmony. Experience a 290 HP engine in an aerodynamic yet sophisticated body.



**19" SILVER
ALLOY WHEELS.**

Take sophistication
to the next level
without sacrificing
performance.

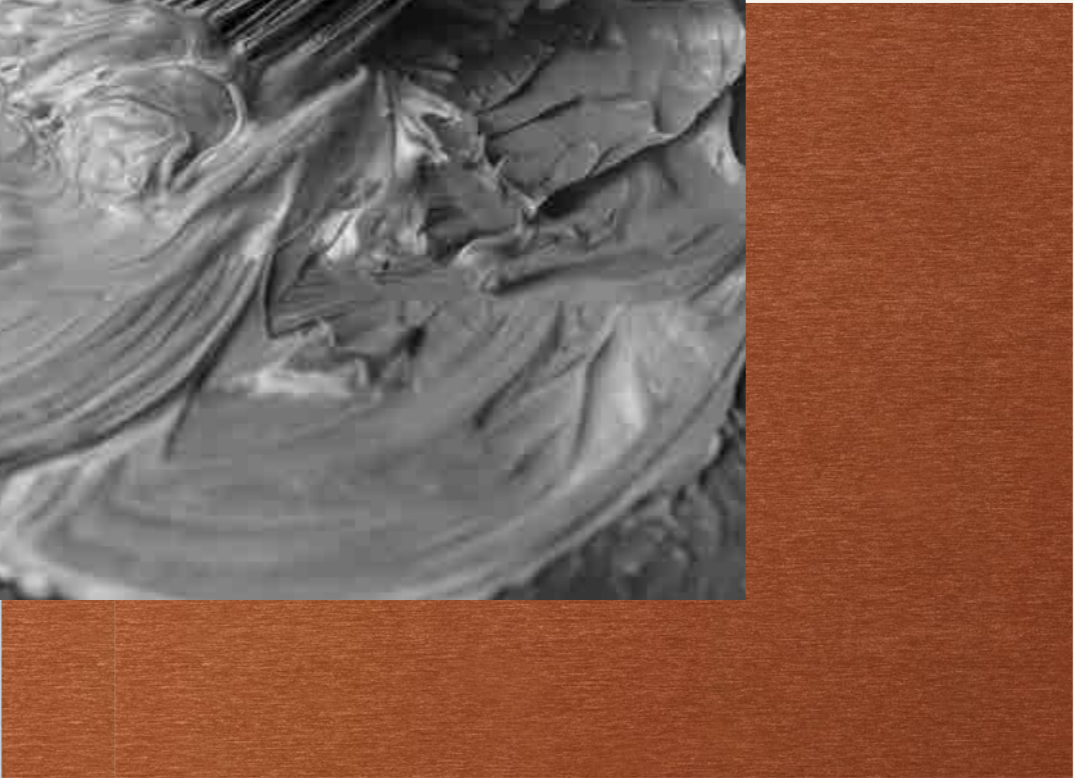
19" CUPRA ALLOY WHEELS.

Combining performance
and elegance at once.





COLOURS



MIDNIGHT BLACK



URBAN SILVER

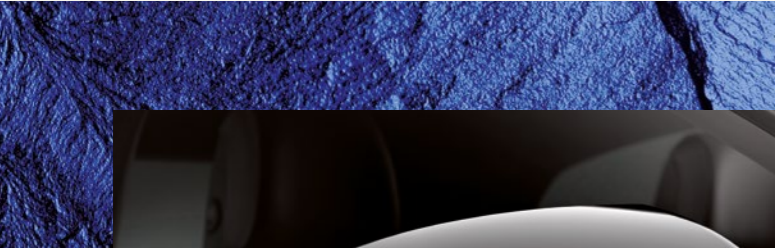


PURE RED



MAGNETIC TECH





MYSTERY BLUE

NEVADA WHITE



DESIRE RED





I N T E R I O R
D E S I G N



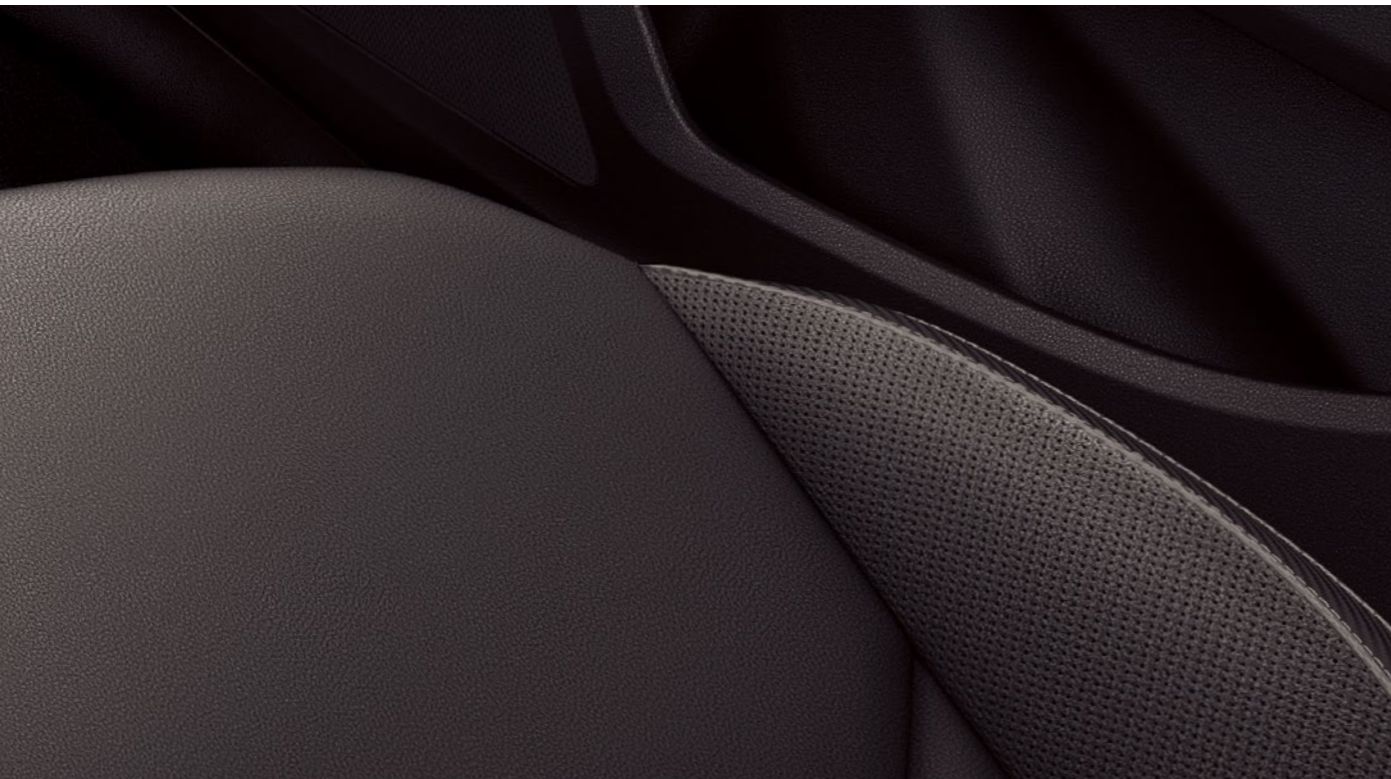
BLACK ALCANTARA.

A microfibre material not only designed for performance, but also adds style to functionality.



COFFEEBLACK LEATHER.

With a soft and smooth finish, this material is the ultimate in sophisticated elegance.



COFFEEBLACK BUCKET.

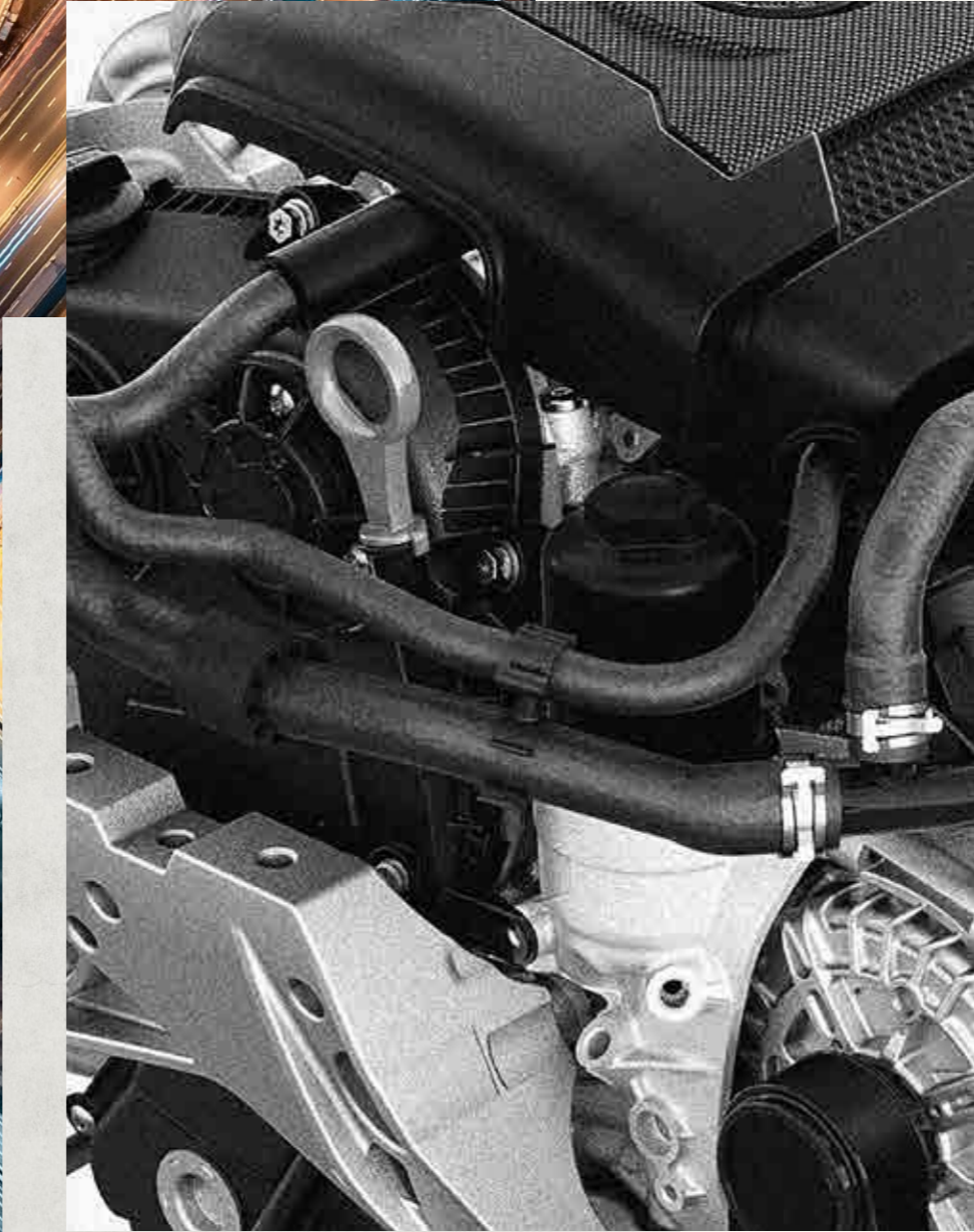
Contemporary sportiness that increases safety without forgetting about style.



MULTICOLOUR AMBIENT LIGHTING.
You set the interior lighting –
8 different colours to choose from.



ELEGANT DETAILS.
Enjoy sophisticated yet
practical details like the
lightweight chrome pedals
and aluminium door sills,
electric sunroof and
bucket seats.



TECHNOLOGY

DIGITAL COCKPIT.

Control all the driving information you need right in front of you on a high-resolution digital screen.



WIRELESS CHARGER.

Discover innovation down to the last detail. Simply place your smartphone inside the box to recharge.

ADAPTIVE PERFORMANCE.

Four drive modes to suit any path you create. Cruise in Comfort mode or go supercharged with CUPRA mode.





SPORT HMI DISPLAY.

Three dials displaying oil temperature, turbo pressure and G-Force for those who like to rev it up.

NAVI SYSTEM PLUS.

Maps, media, and your smartphone all connected in one easy system. This is technology at your service.



DIRECT-SHIFT GEARBOX.

Experience the fastest way to change gears, more power and better control.



STANDARD & OPTIONAL EQUIPMENT



STANDARD

DESIGN - EXTERIOR	LEON CUPRA 5D	LEON CUPRA SPORTSTOURER
CUPRA 19" 30/2 Black High Gloss alloy wheels	•	•
Emergency wheel 18" minispare	•	•
Ventilated front and rear disc brakes with black calipers and CUPRA lettering	•	•
Black exterior mirrors	•	•
Glossy Black radiator grille frame	•	•
Specific CUPRA Suspension	•	•
Specific CUPRA Bumpers	•	•
CUPRA lettering on boot	•	•
High gloss black in B and C pillar	•	•
Visible oval exhaust pipe (both sides)	•	•
Electric sunroof (Panoramic for LEON ST)	◦	◦
Dark tinted rear windows	•	•
LED Door panel illumination multicolour (Ambient Lights)	•	•
Black roof rails	-	•
DESIGN - INTERIOR		
Black interior roof	•	•
Chrome interior pack with decorative mouldings	•	•
Black Interior Pack: glossy black mouldings on air vents and central console frame	◦	◦
Front sport seats (Top Alcantara Black and simil leather with grey stitching)	•	•
Leather Black sport seats and Winter Pack (PW1): Includes Electric driver seat (height, length, inclination and lumbar) without memory	◦	◦
Black interior	◦	◦
Bucket sport seat : Seat heating without lumbar adjustment	◦	◦

DESIGN - INTERIOR	LEON CUPRA 5D	LEON CUPRA SPORTSTOURER
Manual height adjustment for front seats	•	•
Manually adjustable lumbar support in front seats	•	•
Luggage pockets on front seat backrests	•	•
Easy back seat release	-	•
Front and rear headrests	•	•
Rear seats backrest 1/3 and 2/3 split folding and reclining with rear armrest	•	•
Rear armrest	•	•
Box under driver and passenger seat	•	•
Left side net in boot	•	-
Driver and passenger sun visor, covered and illuminated mirror, driver with card holder	•	•
Center armrest in front, with integrated cupholder, armrest, and air outlets	•	•
Electric Parking Brake (EPB)	•	•
Progressive steering	•	•
Leather multifunction steering wheel with CUPRA design and leather gear shift knob	•	•
Cargo rings in boot	•	-
Double floor in boot	◦	•
Sliding boot cover	-	•
Warning buzzer when lights on (interior)	•	•
Climatronic 2 zones with Air Care	•	•
Pedals in aluminium cover	•	•
Illuminated CUPRA scuff plates in door apertures	•	•
Divider net	-	•

• Standard ◦ Optional - Not available

SAFETY	LEON CUPRA 5D	LEON CUPRA SPORTSTOURER
6 Airbags (2 front, 2 front side and 2 curtain)	•	•
Front seat-belt reminder	•	•
iSOFIX and Top Tether child seat anchors	•	•
Automatic Post-Collision Braking System	•	•
ASR and ABS	•	•
ESC, XDS and Tyre pressure monitoring system	•	•
Electronic Cruise Control System (CCS) with indicators in cluster	•	•
ESC Switch off key	•	•
Rear side airbag	○	○
Passenger airbag deactivation	•	•
Knee airbag	•	•
Safety Pack: Seat belt reminder (front and rear seats) and Tiredness Recognition	○	○
ELECTRONICS		
Automatic coming and leaving home function	•	•
Front electric windows	•	•
Rear electric windows	•	•
Electric, heated and foldable exterior mirrors with parking position and co-driver with lowering function	•	•
12V in front	•	•
12V in front and 2 side covers in boot (right and left)	–	•
Illuminated glove box	•	•
Central locking with radio remote control (two foldable keys) and interior controls	•	•
Digital Cockpit	•	•
SEAT Nav System :		
- 8" Smart touch display		
- Sound features: MP3/WMA		
- Connectivity: 2×USB (Apple chip)/2×SD card/CD/Aux-in/Bluetooth®	•	•
- 8 speakers		
- Voice recognition with navigation functionality		
- 2 additional charge-only USBs in rear		
Cartography Europe (SD Card without Mapcare)	•	•
Cartography Europe (SD Card with Mapcare)	○	○
SEAT Nav System Plus:		
- 8" Smart touch display		
- Sound features: MP3/WMA		
- Connectivity: 2×USB (Apple chip)/2×SD card/DVD/Aux-in/Bluetooth® (phone and audio streaming)/WLAN connectivity and 8 speakers	○	○
- Voice recognition with navigation functionality		
- SEAT Full Link. SMS, e-mail.		
- Real/3D Navigation. HDD 10Gb, Media Control functionality and Cartography included		
- 2 additional charge-only USBs in rear		
Cartography Europe (with Mapcare)	○	○
Digital Audio Broadcasting (DAB)	○	○

ELECTRONICS	LEON CUPRA 5D	LEON CUPRA SPORTSTOURER
BeatsAudio™ incl. 10 speakers	○	○
Bluetooth® (phone and audio streaming)	•	•
SEAT Full Link Technology : MirrorLink™, Apple CarPlay™ and Android Auto™	○	○
Connectivity box: Wireless mobile phone charger + mobile signal amplifier	○	○
Kessy (Keyless entry and go) and My Beat without safe function	○	○
Kessy (Keyless entry and go) and My Beat with safe function	○	○
Alarm and Safe function	○	○
Paddles in steering wheel	•	•
Sport-HMI	•	•
Front differential lock (VAQ)	•	•
Rear parking distance control	○	○
Front and rear parking distance control (OPS)	○	○
Rear view camera	○	○
Ambient traffic monitoring (Front Assist) with city emergency braking function	○	○
Adaptive Cruise Control (ACC) with Autonomous Break (Front Assist) with Pedestrian Protection and Stop&Go	○	○
SEAT Full LED: LED headlamps with LED DRL and SEAT LED Highway Assist, LED front fog lamps with out cornering lights and Full LED rear lamps (number plate LED light)	•	•
CUPRA Drive Profile:		
Steering response, throttle response, gear shifts mode, Soundaktor and Adaptive Chassis Control (DCC)	•	•
LED Interior Illumination Pack:		
Reading lights (front and rear) with ambient spots, make-up lights, foot area, boot lights, center console area and LED boot lights	•	•
Convenience Pack:		
Electrochromic interior rear view mirror with rain and light sensor, Automatic coming and leaving home function and windshield wiper control	•	•
Driving Assistance Pack 1:		
Monovideocamera (High Beam Assist and Lane Assist)	○	○
Driving Assistance Pack 2 :		
Driving Assistance Pack 1 (High Beam Assist and Lane Assist) and Traffic Sign Recognition	○	○
Advanced Comfort and Driving Pack 2 :		
Driving assistance pack 2 (High Beam Assist, Lane Assist and Traffic Sign Recognition), Adaptive Cruise Control (ACC), Front Assist with Pedestrian Protection and Stop&Go, Traffic Jam Assist and Emergency Assist	○	○
Winter Pack:		
Heated front seats, head lamp washer, heated wash water and heated mirrors	○	○

• Standard ○ Optional – Not available

TECHNICAL SPECIFICATIONS

LEON CUPRA SPORTSTOURER

ENGINE	2.0 TSI 213 kW (290 CV) DSG-7 Start/Stop	2.0 TSI 221 kW (300 CV) 4Drive DSG-7 Start/Stop
Cylinder/Valve (Total)	4/16	4/16
Displacement (cc)	1984	1984
Bore/stroke (mm)	82,5 / 92,8	82,5 / 92,8
Compression ratio	9,3	9,3
Maximum power (kW (HP) /rpm)	213 (290) / 5400 - 6500	221 (300) / 5300 - 6500
Max. torque (Nm/rpm)	380 / 1950 - 5300	400 / 2000 - 5200
Fuel supply system	TSI Direct Injection	
Ignition	Electronic map-controlled ignition	
Atmospheric / Supercharged	Turbo charged	
Fuel type	ROZ98	
Oil capacity in initial fill (l)	6,6	
Alternator (A)	140	140
Battery (Ah/A)	69 / 360	69 / 360

PERFORMANCE

Max. speed [km/h (gear)]	250 (VI)	250 (VI)
Acceleration 0-80 km/h (s)	4,6	3,3
Acceleration 0-100 km/h (s)	6,3	4,9
Acceleration 80-120 km/h (s) in V,max.gear	10,7	8,7
Acceleration 0-1000 m (s)	25,9	24,3

FUEL CONSUMPTION

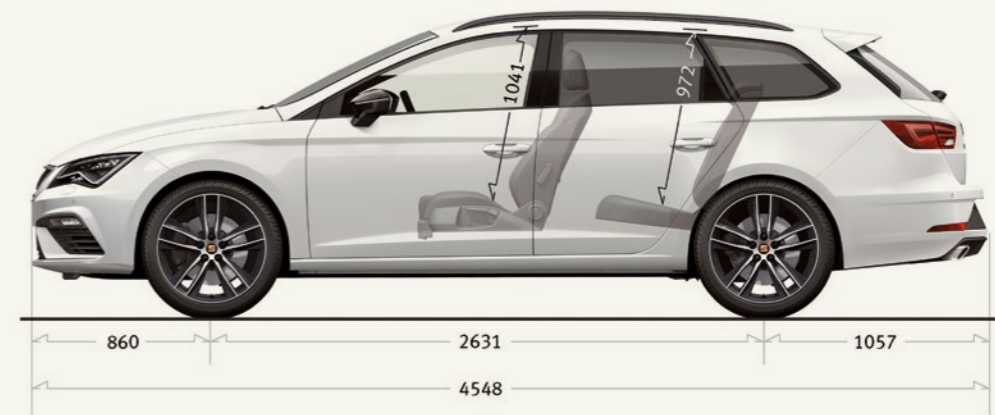
	C	E	C	E
Urban (l/100 km)	8,6	8,6	9,0	9,1
Extra Urban (l/100 km)	5,4	5,5	6,0	6,1
Combined (l/100 km)	6,5	6,7	7,1	7,2
Combined WLTP Range (l/100km) (Global offer)	7,4 - 7,9	7,4 - 7,9	8,2 - 8,8	8,2 - 8,8

MASS EMISSION

	2.0 TSI 213 kW (290 CV) DSG-7 Start/Stop	2.0 TSI 221 kW (300 CV) 4Drive DSG-7 Start/Stop
CO ₂ Urban (g/km)		
CO ₂ Extra urban (g/km)		
CO ₂ Combined (g/km)		
CO ₂ Combined WLTP Range (g/km) (Global offer)		
CO (EU6: mg/km)		
HCT (EU6: mg/km)		
NOX (EU6: mg/km)		
HCT+NOX (EU6: mg/km)		
Particles mass (EU6: mg/km)		
NMHC (mg/km)		

TRANSMISSION

Gearbox type:	DQ381-7F + VAQ	DQ381-7A
Ratios		
I	3,190	3,190
II	2,750	2,750
III	1,897	1,897
IV	1,040	1,040
V	0,793	0,793
VI	0,860	0,860
VII	0,661	0,661
R	2,900	2,900
Group 1 ratio	4,471	4,471
Group 2 ratio	3,304	3,304
Group 3 ratio	-	-
Speed 1000 rpm in IV/V/VI/VII (km/h)	-	-



CHASSIS

	2.0 TSI 213 kW (290 CV) DSG-7 Start/Stop	2.0 TSI 221 kW (300 CV) 4Drive DSG-7 Start/Stop
Front suspension	Independent type McPherson - coil springs - hydraulic shock absorber [DCC equipment (Adaptive chassis control): see Commercial Offer]	
Rear suspension	Multilink axle / 63 Rear suspension Multilink a./coil sp. /hyd. shock ab.	
Steering system	R-EPS (Rack Electric Power System), Versions w. DCC and CUPRA: R-EPS Progressive steering	
Turning diameter (m)	10,5	
Brake system	Dual hydraulic circuit and brake system diagonal split with brake booster	
Front/Rear brake type	Front and rear ventilated disc brakes	
Front brakes (mm)	340 x 30	
Rear brakes (mm)	310 x 22	

WHEELS

Rims	8J x 19 ET50
Tyres	235/35 R19 91Y

PACKAGE (In running order w/o driver)

	2.0 TSI 213 kW (290 CV) DSG-7 Start/Stop	2.0 TSI 221 kW (300 CV) 4Drive DSG-7 Start/Stop
Body Type	5D	
Length / width / height (mm)	4548 / 1816 / 1431 (height w. D. Railing)	
Wheelbase (mm)	2631	
Front / Rear track (mm)	ET50 1536 / 1510	
Boot capacity (l)	587	
Fuel tank capacity (l)	55	

WEIGHTS

In running order with driver (kg)	1.476	1.557
In running order with driver (kg) Front / Rear	888 / 588	899 / 658
Max. weight allowed (kg)	2.020	2.090
Max. towing weight without brake (kg)	730	750
Max. towing weight with brake 8% (kg)	730	750
Max. Towing weight with brake 12% (kg)	730	750

TECHNICAL SPECIFICATIONS

LEON CUPRA 5D

ENGINE	2.0 TSI 213 kW (290 CV) DSG-7 Start/Stop
Cylinder/Valve (Total)	4/16
Displacement (cc)	1984
Bore/stroke (mm)	82,5 / 92,8
Compression ratio	9,3
Maximum power (kW (HP) /rpm)	213 (290) / 5400 - 6500
Max. torque (Nm/rpm)	380 / 1950 - 5300
Fuel supply system	TSI Direct Injection
Ignition	Electronic map-controlled ignition
Atmospheric / Supercharged	Turbo charged
Fuel type	ROZ 98
Oil capacity in initial fill (l)	6,6
Alternator (A)	140
Battery (Ah/A)	69 / 360

PERFORMANCE

Max. speed [km/h (gear)]	250 (VI)
Acceleration 0-80 km/h (s)	4,4
Acceleration 0-100 km/h (s)	6,0
Acceleration 80-120 km/h (s) in V.max.gear	-
Acceleration 0-1000 m (s)	25,5

FUEL CONSUMPTION

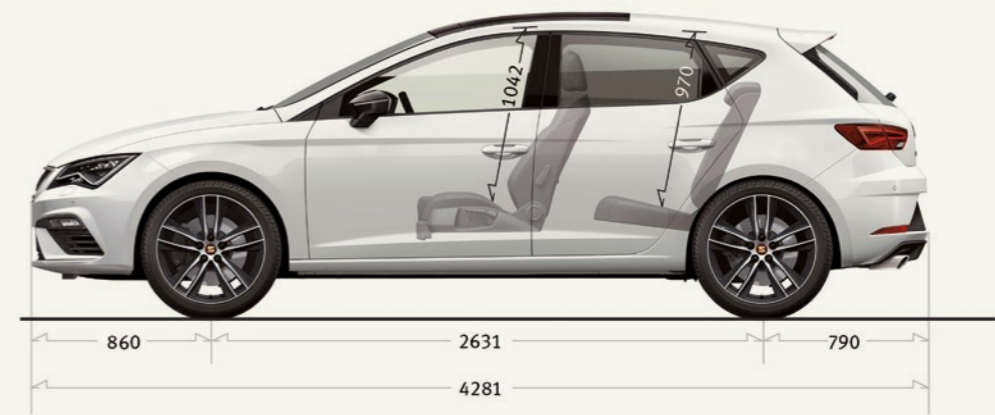
	C	E
Urban (l/100 km)	8,6	8,6
Extra Urban (l/100 km)	5,4	5,5
Combined (l/100 km)	6,5	6,7
Combined WLTP Range (l/100km) (Global offer)	7,3 - 7,9	7,3 - 7,9

MASS EMISSION

	2.0 TSI 213 kW (290 CV) DSG-7 Start/Stop
CO ₂ Urban (g/km)	
CO ₂ Extra urban (g/km)	
CO ₂ Combined (g/km)	
CO ₂ Combined WLTP Range (g/km) (Global offer)	
CO (EU6: mg/km)	
HCT (EU6: mg/km)	
NOX (EU6: mg/km)	
HCT+NOX (EU6: mg/km)	
Particles mass (EU6: mg/km)	
NMHC (mg/km)	

TRANSMISSION

Gearbox type:	DQ381-7F + VAQ
Ratios	
I	3,190
II	2,750
III	1,897
IV	1,040
V	0,793
VI	0,860
VII	0,661
R	2,900
Group 1 ratio	4,471
Group 2 ratio	3,304
Group 3 ratio	-
Speed 1000 rpm in IV/V/VI/VII (km/h)	26,0/33,6/42,9/--



CHASSIS

2.0 TSI 213 kW (290 CV)
DSG-7 Start/Stop

Front suspension	Independent type McPherson - coil springs - hydraulic shock absorber [DCC equipment (Adaptive chassis control): see Commercial Offer
Rear suspension	Multilink axle
Steering system	R-EPS (Rack Electric Power System), Versions w. DCC and CUPRA: R-EPS Progressive steering
Turning diameter (m)	10,5
Brake system	Dual hydraulic circuit and brake system diagonal split with brake booster
Front/Rear brake type	Front and rear ventilated disc brakes
Front brakes (mm)	340 x 30
Rear brakes (mm)	310 x 22

WHEELS

Rims	8J x 19 ET50
Tyres	235/35 R19 91Y

PACKAGE (In running order w/o driver)

2.0 TSI 213 kW (290 CV)
DSG-7 Start/Stop

Body Type	5D
Length / width / height (mm)	4281 / 1816 / 1435
Wheelbase (mm)	2631
Front / Rear track (mm)	ET50 1536/1510
Boot capacity (l)	380
Fuel tank capacity (l)	50

WEIGHTS

In running order with driver (kg)	1.431
In running order with driver (kg) Front / Rear	891 / 540
Max. weight allowed (kg)	1.920
Max. towing weight without brake (kg)	710
Max. towing weight with brake 8% (kg)	710
Max. Towing weight with brake 12% (kg)	710

SEAT is committed to a policy of continuous product development and reserves the right to make changes to specifications, colours and prices without notice. The information in this brochure can therefore be given as guidance only. While SEAT makes every effort to ensure that specifications are accurate at the time of publication, you should always check with your authorised SEAT Partner for the latest information. Due to limitations of the printing process the colours reproduced in this brochure may vary slightly from the actual paint colour and material. This vehicle and all its parts, as well as the original spares, were designed according to the Legal Regulations governing the prevention and minimisation of Environmental Impact, through the use of recycled/recyclable materials, with measures taken to achieve suitable recycling for the conservation and improvement of environmental quality.

11/2019. Printed in Spain.



WWW.CUPRAOFFICIAL.COM

WHAT IF WE TOLD YOU THE END
ONLY MEANS MORE? DISCOVER
THE SPECIAL EDITION ON THE
OTHER SIDE.